



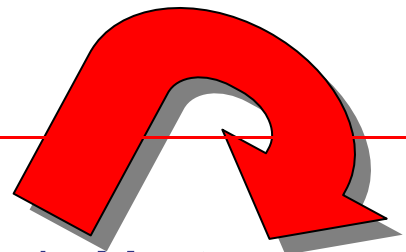
Drain Master Industrial Gate Valve



Product Data

Drain Master is an electrically operated, one touch gate valve designed for a variety applications. This low pressure (4PSI) valve can be used to transfer water, air or vacuum, as well as materials, grain, powders, etc.

- Made of durable, injection molded ABS plastic.
- Very fast gate opens or closes in less than one second, initiated by a switch located virtually anywhere.
- Weighs less than two pounds, with ultra sleek profile.
- **Features 303 Stainless Steel, double sided manual override and gearing made in Switzerland**
- Operates on standard 12 volt RV systems, and draws less than 5 amps during operation.
- Standard 3 inch pipe fittings and remote switching features provide maximum design placement flexibility.
- Reducer kit available for smaller piping.



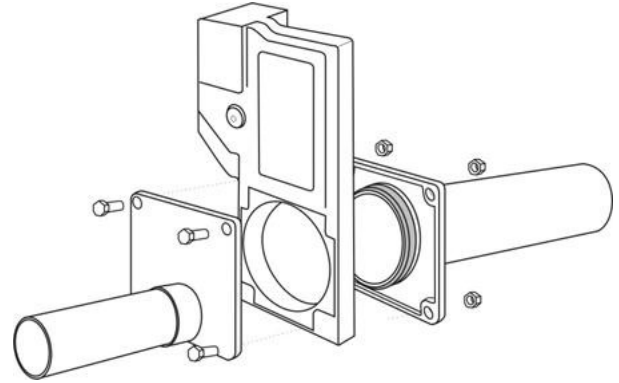
Drain Master
The Perfect Solution

www.drainmaster.com 877-787-8833



Technical Specifications

- Height 10"
- Width 6"
- Depth 3/4" - 1 3/4" max
- Valve Size 3"
- Weight 1 lb 14 oz
- Voltage 12 Volts DC
- Consume 5 amps max per cycle
- Wire 20 AWG



Torque Spec for Flange Bolts 20" (inch pounds)

Testing Data

Continuous Cycle Test	Cycle Weeks		Per Year		Cycles		Years
	3 x 52	=	156	÷	6000	=	38.46



www.drainmaster.com 877-787-8833

Valve Orientation

